

**Sustainable Power Solution**  
Vehicle Electrification  
**Solar Panel**  
光伏能源

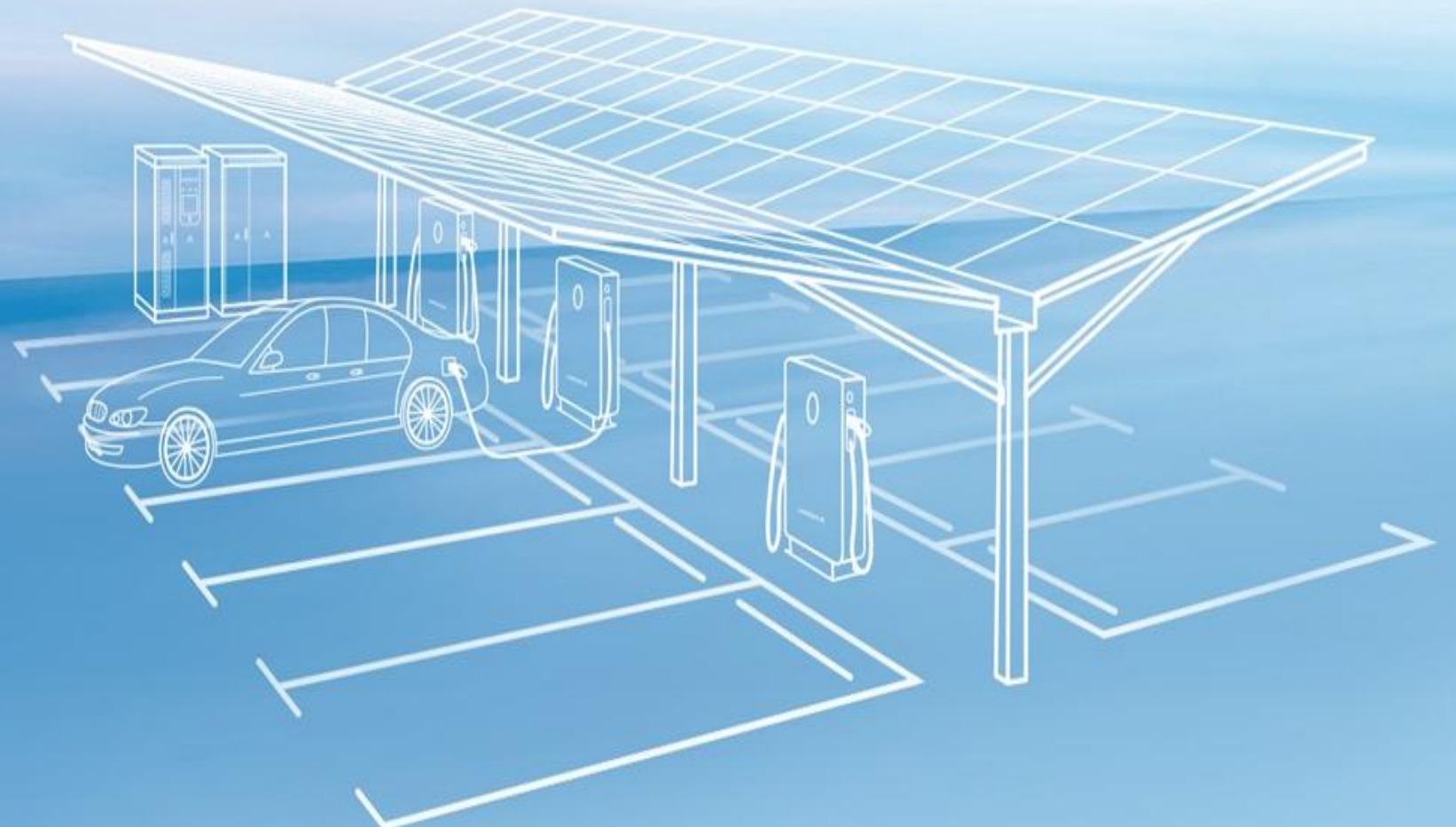


**CHINA VEHICLE INDUSTRY**  
*Powering Your Future*

**China Vehicle Industry Co.,Ltd**

**Hybrid Solar System**

- ✓ Solar Panel
- ✓ 太阳能组件
- ✓ Energy Storage
- ✓ 储能
- ✓ Charging Station
- ✓ 充电桩
- ✓ Energy Storage/Charging Station
- ✓ 光,储,充一体解决方案



# Hybrid Solar System

## 离并网一体发电系统

1

## Solar Energy Solution

Products and services

# PV System Configuration and Services

## Main Functional Advantages of the Product

### One-Stop Service

Easily Own Your Own Power Station

1. Information



2. Dimensions



3. Simulation

4. Presentation



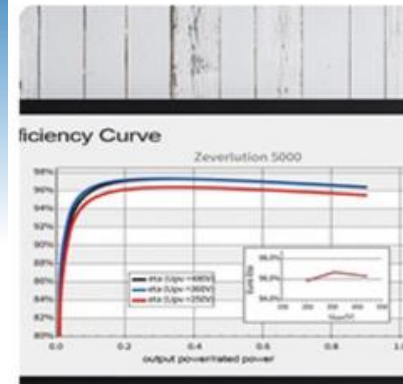
5. Installation



6. Accept



7. Maintenance



Power generation conversion 97.25%



Efficient implementation of high-power demand



Monitor equipment operation at any time



Stable power generation Data available



Monitoring photovoltaic Management system



Built in WIFI Monitoring module

# PV System Configuration and Services



Models	3KW System	5KW System	8KW System	10KW System	15KW System
PV Panels	330W*9 (Pcs)	330W*16 (Pcs)	330W*24 (Pcs)	330W*30 (Pcs)	330W*45 (Pcs)
Capacity	2970	5280	7820	9900	14850
Daily Power	11.8 kw.h/Day	21.1 kw.h/Day	31.6 kw.h/Day	39.6 kw.h/Day	59.4 kw.h/Day
Installation	Guidance	Guidance	Guidance	Guidance	Guidance

Models			
	BGG3000-S	BGG5K-LT-G2	BGG10-LT-G2
Starting Voltage	80V	80V	250V
MPPT Voltage Range Input Voltage	70-250V/360V	100-520V/360V	270-900V/460V
MPPT Capacity	98.20%	98.20%	98.20%
Rated Power	3000W	5000W	10000W
DC Input Power	3150W	5300W	10500W
Input Strings	1	1	1
MPPT QTY.	1	2	2
Frequency	50.60±5 Hz	50.60±5 Hz	50.60±5 Hz
Voltage Range	220.230.240 /180-280v	3/N/PE/3/PE/ 220/380/230/400V	3/N/PE/3/PE/ 220/380/230/400V
Net Weight	12KG	13.5KG	18KG
Dimensions	376*355*145mm	424*375*172mm	503*435*183mm
Design Life	15 Years	15 Years	15 Years

## Product Quality Commitment



**Inverter**

- One year replacement**
- Five year warranty**
- Lifetime maintenance**



**PV Panel**

- Power warranty for ten years**
- Power generation loss 10%**
- Guaranteed power**



**Accessory**

- One year warranty**

A set of photovoltaics, one investment, long-term returns

SOLVE HIGH ELECTRICITY BILLS



Taking 10KW for Example

**14400** kw.h

Save Electricity Bills

**8928** RMB

Calculated based on the average 4 hours of light in China

## Industrial/Commercial Photovoltaic Power Plants

- ◆ Faster Payback
- ◆ More Power Efficient
- ◆ And More Profitable

**Electricity price 1 RMB**

**3.5 year return the cost**

**25 year profit**



# Can Effectively Reduce Indoor Temperature

INSTALL PHOTOVOLTAIC ON THE ROOF OF THE IDLE ROOF



# Support for Solar Panels

Customizable Design Based on Customer Installation Environment



Ground Support



Roof Support



Roof Support



Top Building



Sunshine Room Bracket

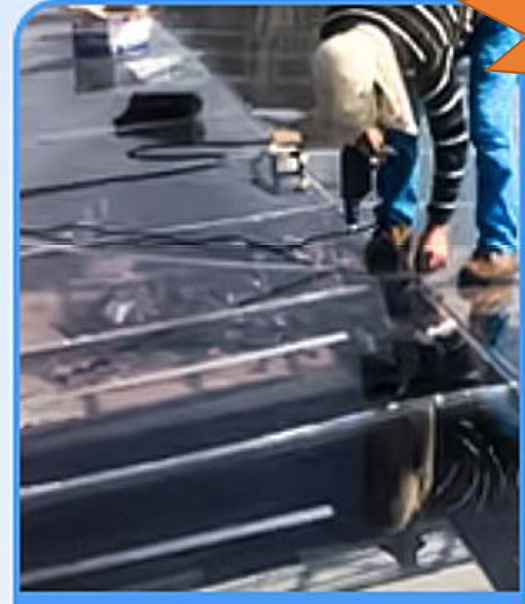


PPGI Roof

Can reduce indoor temperature



Without dismantling the bracket



No need to disassemble the glass

Working Mode Diagram: 工作模式示意图



Solar energy

# Legal and compliant photovoltaic greenhouse

// \_\_\_\_\_

Sunshine glass houses are built on the basis of legal sunshades  
Allowing customers to enjoy legal sunshades, generate electricity to make  
money, and also enjoy high-tech living spaces

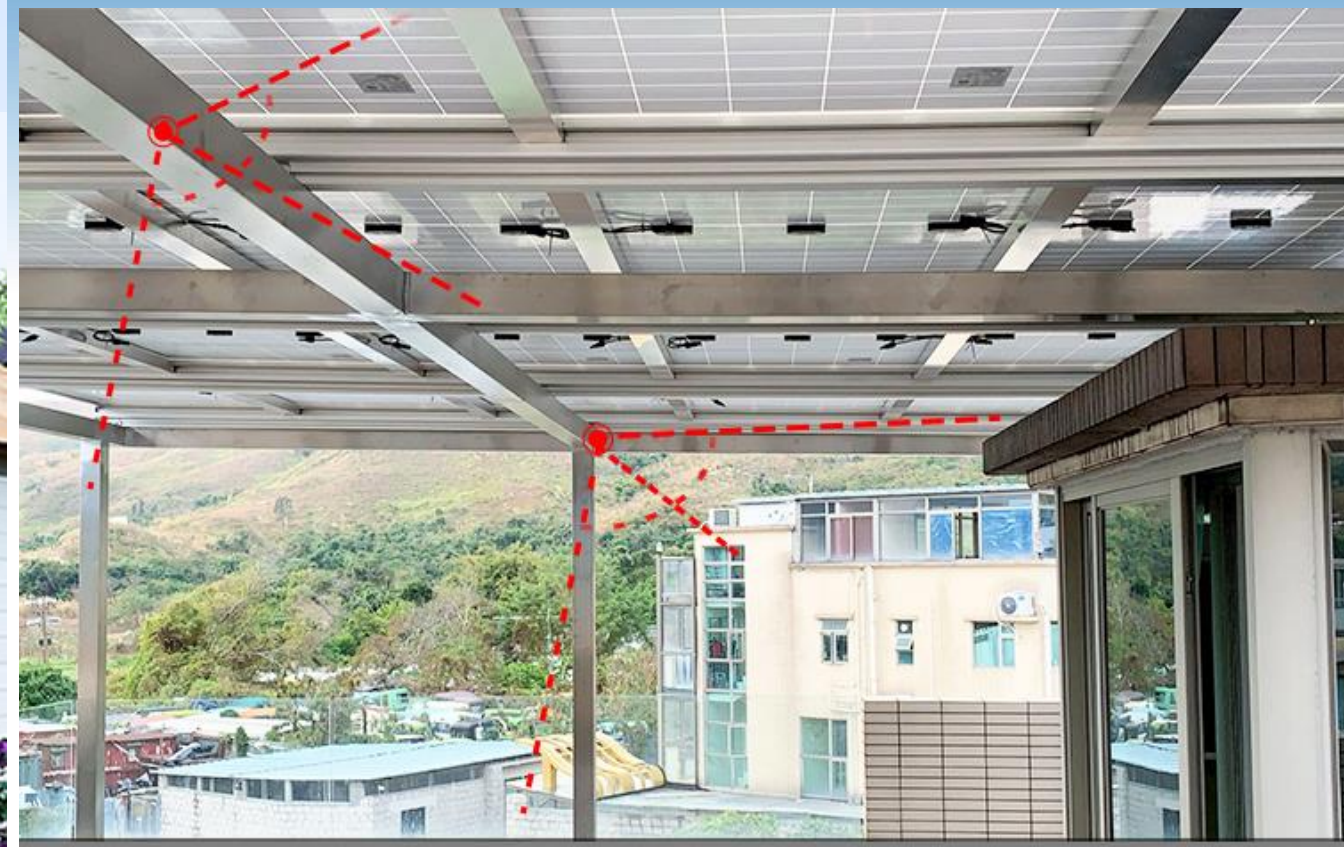


If there are special needs, we can also provide  
**3D simulation** design, which is more intuitive

# Free Custom Design

## Provide stainless steel canopy support design

Made of 316 or 304 stainless steel material  
Steel frame building structure, flexible overlap, sturdy and reliable



Photovoltaic power plants can operate normally under  
**14 typhoons**/40 high temperatures/minus 50 degrees Celsius temperatures

# Which places are suitable for installing photovoltaic power generation?

# System Composition



Private Villa



Household electricity



Agricultural Greenhouses



- 1. Solar Panels
- 2. DC combiner box
- 3. Inverter
- 4. Monitor system
- 5. Transformer
- 6. Distribution cabinet
- 7. Power consumption in the factory area
- 8. On-grid



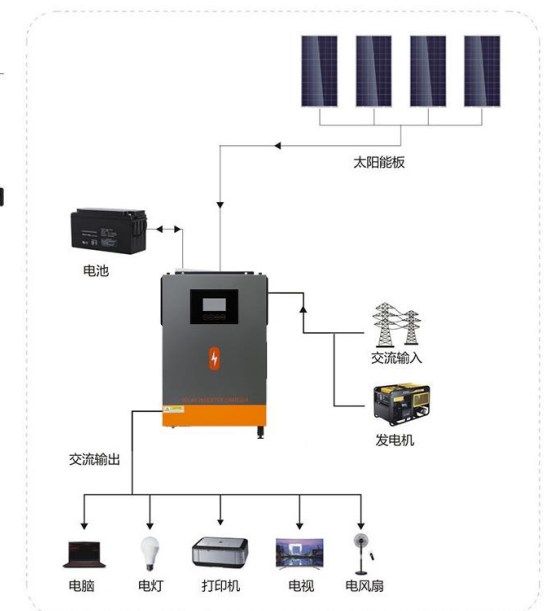
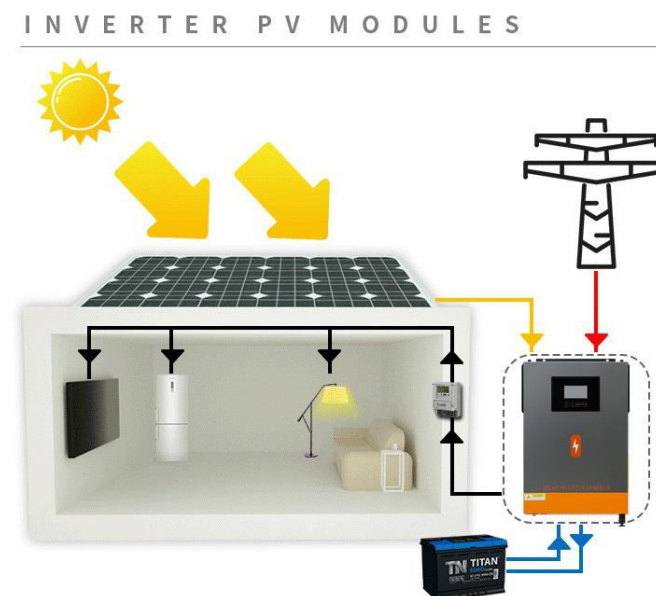
Office Building Roof



Factory Buildings



Commercial Buildings



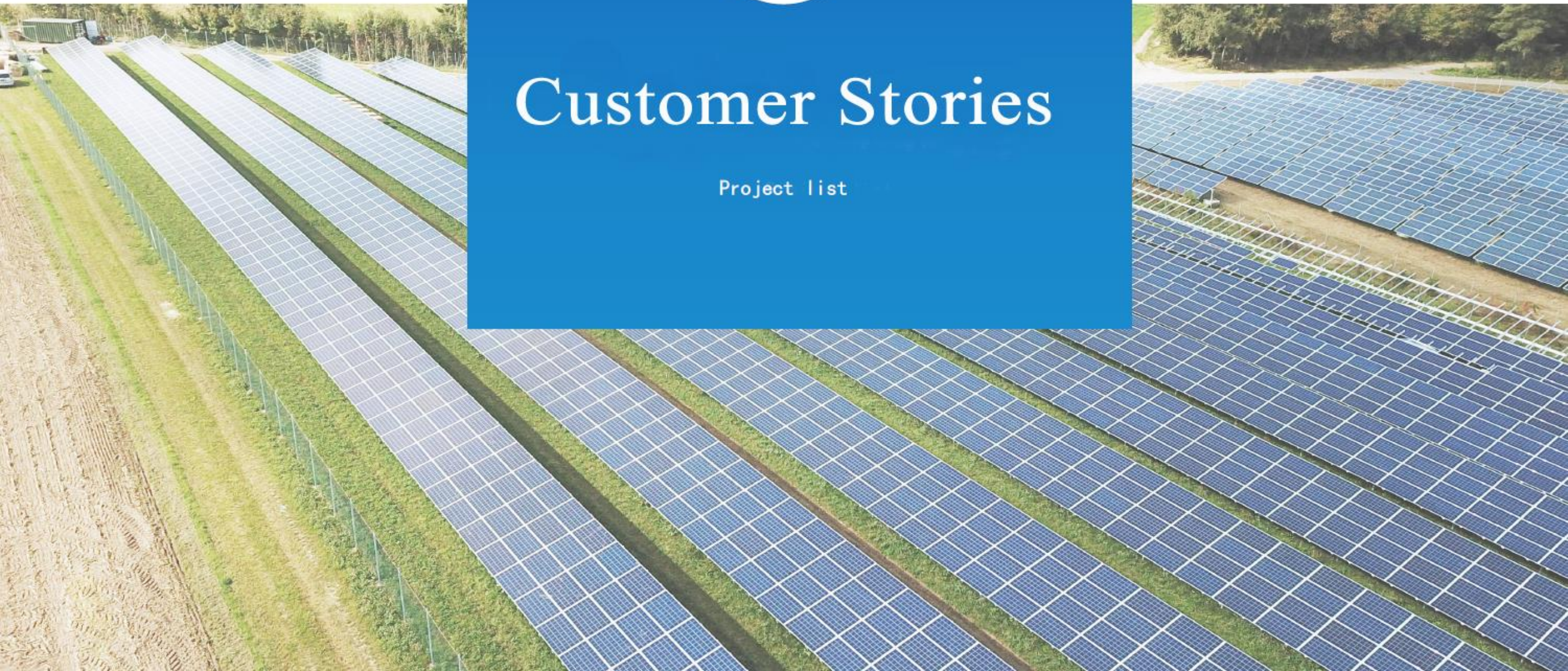


# Some Customer Cases

2

## Customer Stories

Project list



# Installation of villa 8kw photovoltaic project



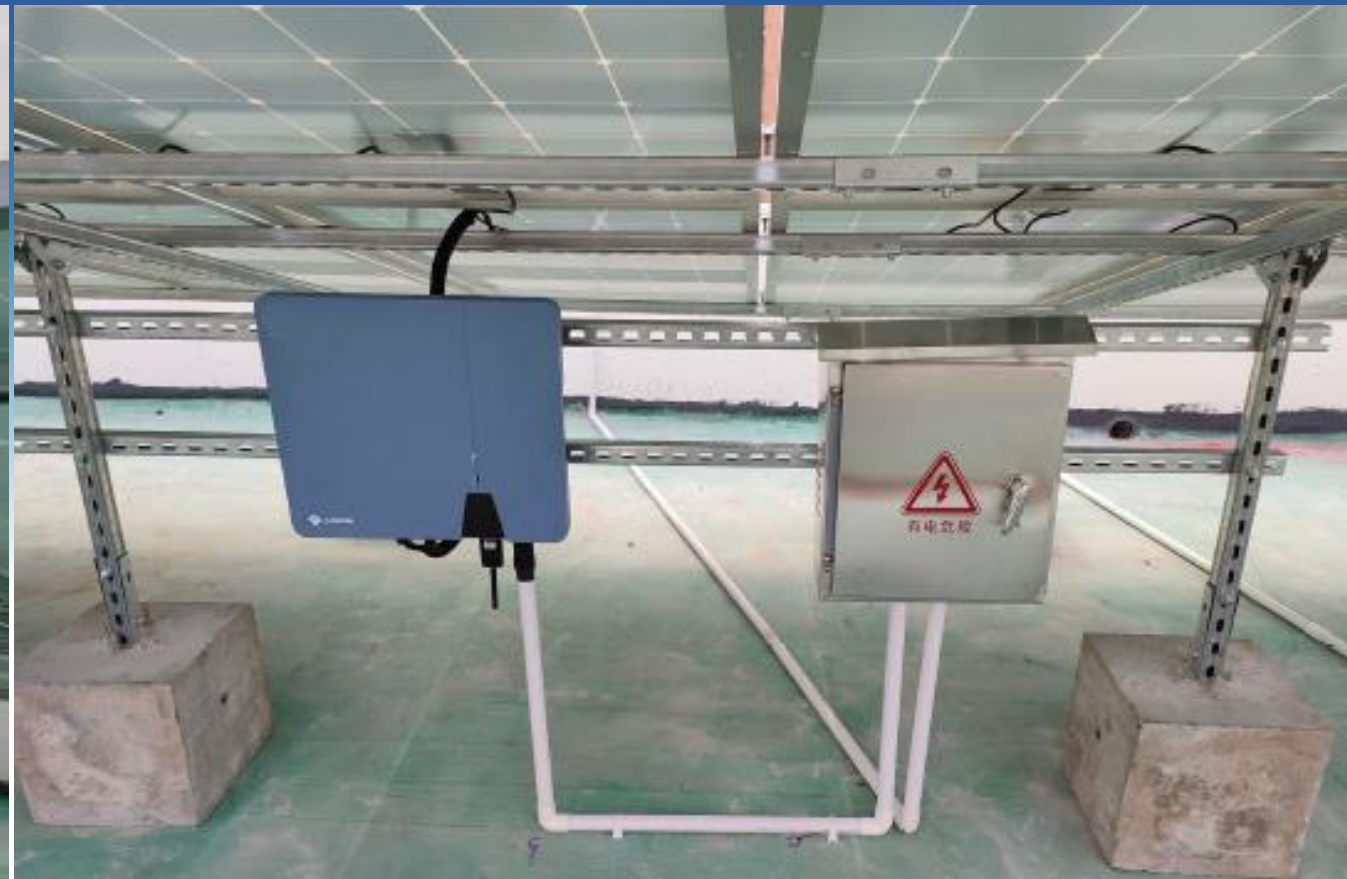
# Grid connected single-phase 8kw project



# Grid connected single-phase 8kw project



# Grid connected three-phase 15kw project



# Outdoor 15kw photovoltaic power station



# Budget for MYANMAR GREAT MOTOR COMPANY

3

## Budget Quotation

Project Concept

# Budget for MYANMAR GREAT MOTOR COMPANY

PV Types	Inverter	Solar Panel	PDB	Installation	Cable	Certificate	Unit Price RMB
Grid connected single-phase 3kw	1 with WIFI	36v330w*9	1	2 boards in a row/5 sets	DC	√	17,920.00
Three phase grid connected 5kw	1 with WIFI	36v330w*16	1	16 boards in a row	DC	√	29,120.00
Three phase grid connected 5kw	1 with WIFI	36v340w*16	1	16 boards in a row	DC	√	31,360.00
Three phase grid connected 8kw	1 with WIFI	36v330w*24	1	2 boards in a row/12 sets	DC	√	42,560.00
Three phase grid connected 10kw	1 with WIFI	36v330w*30	1	2 boards in a row/15 sets	DC	√	51,520.00
Three phase grid connected 15kw	1 with WIFI	36v330w*45	1	2 boards in a row/23 sets	DC	√	71,680.00
Three phase grid connected 20kw	1 with WIFI	36v330w*60	1	2 boards in a row/30 sets	DC	√	98,560.00
Three phase grid connected 33kw	1 with WIFI	36v330w*102	1	2 boards in a row/51 sets	DC	√	135,520.00
Three phase grid connected 50kw	1 with WIFI	36v330w*150	1	2 boards in a row/75 sets	DC	√	207,200.00

## Certification / 证书



ISO 9001:2016



RoHS



CE



TUV



UL



中仁南



# MYANMAR GREAT MOTOR COMPANY

## TO BE THE BEST





CHINA VEHICLE INDUSTRY

*Powering Your Future*



北 圭 汽 车

CHINA VEHICLE INDUSTRY



江苏北圭汽车科技有限公司

CHINA VEHICLE INDUSTRY Co., Ltd.

Engineering the Impossible, Powering your Future.

